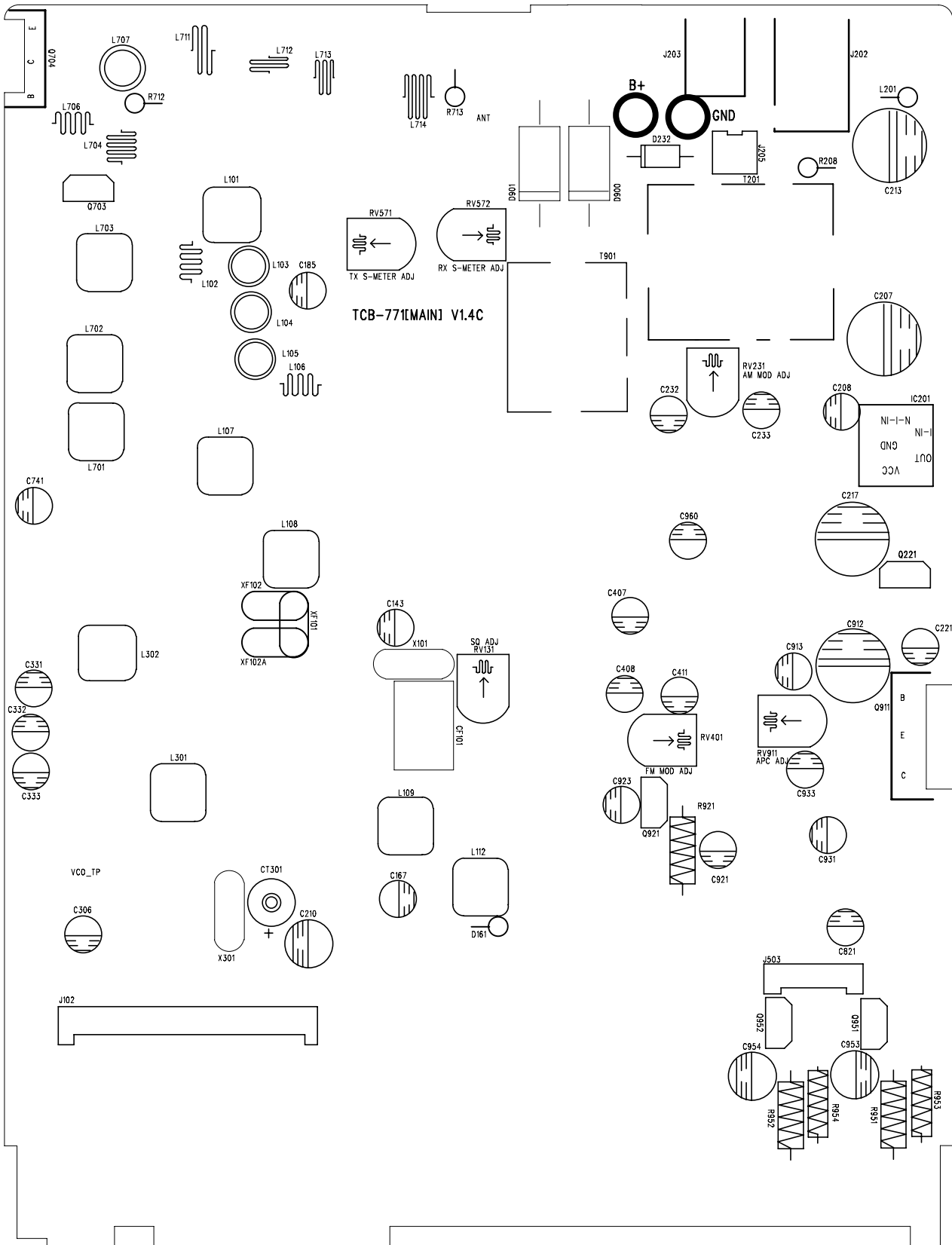


**TTI Tech**

**TITLE : TCB-771**

DRAWN	CHECKED	CHECKED	APPROVED	SHEET
S.J.KWON				1 OF 1
				REV
2007.11.04.				378





TCB-771[MAIN] V1.4C

RV571  
TX S-METER ADJ

RV572  
RX S-METER ADJ

C14.3  
X101

SO ADJ  
RV131

101.1C

RV401  
FM MOD ADJ

Q921

R821

C921

RV911  
APC ADJ

C933

Q911

B

E

C

J903

Q952

C954

R852

Q951

C953

R851

Q951

R853

P0.0

L707

L711

L712

L713

L706

L704

R712

L703

L702

L701

C741

L101

L102

L103

C185

L104

L105

L106

L107

L108

XF102

101.2X

XF102A

L302

L301

C331

C332

C333

VCO\_TP

C306

X301

CT301

C210

J102

J203

B+

GND

D232

J202

L201

C213

T201

R208

D901

D900

T901

C207

RV231  
AM MOD ADJ

C232

C233

C208

IC201

NI-I-N

GND

CA

L10

C217

Q221

C960

C407

C408

C411

C913

C912

C221

L109

C167

L112

D161

## TCB771

NO	LEVEL	PART NUMBER	DESCRIPTION	QTY	LOCATION NO.
1	[ASS'Y]	5A0-7702-000	VOL. PCB ASS'Y - TCB771	1.00	
2	[PART]	425-0680-000	COIL AXIAL 6.8UH AL0305 MATSUTA	4.00	L501 L502 L504 L506
3	[PART]	500-7702-100	TCB771 VOL. PCB V 2.0A	1.00	
4	[PART]	540-0607-000	WIRE HARNESS PH-6PIN TO OPEN UL1007 NO.26 L=70mm	1.00	J502
5	[PART]	540-1605-000	WIRE HARNESS PH-16PINx2 UL1007 #26 L=50mm FINE	1.00	J102 J102
6	[PART]	540-1618-000	WAFER 16PIN PH-16A 180C FINE	1.00	J101
7	[PART]	541-0166-002	CONNECTOR SOCKET FD-MIC6PIN-F NINGBO	1.00	J501
8	[PART]	547-0415-000	HEAT SHRINK TUBE DIA4.0MM X 15MM	6.00	
9	[PART]	560-1010-000	SW ROTARY PS1210-KQ20A10-A20-102 CTR	1.00	SW811
10	[PART]	570-0901-001	VR R09710NS-KQ15A6.0-A103-015 CTR	2.00	VR101 VR102
11	[ASS'Y]	5A0-7702-100	LCD PCB ASS'Y - TCB771	1.00	
12	[PART]	142-102J-000	CHIP RES. 0603 1KOHM +-5 PHILIPS	1.00	R810
13	[PART]	142-103J-000	CHIP RES. 0603 10KOHM +-5 PHILIPS	5.00	R805 R806 R807 R811 R814
14	[PART]	142-104J-000	CHIP RES. 0603 100KOHM +-5 PHILIPS	1.00	R804
15	[PART]	142-105J-000	CHIP RES. 0603 1MOHM +-5 PHILIPS	1.00	R803
16	[PART]	142-222J-000	CHIP RES. 0603 2.2KOHM +-5 PHILIPS	6.00	R04 R832 R833 R834 R835 R836
17	[PART]	142-224J-000	CHIP RES. 0603 220KOHM +-5 PHILIPS	1.00	R808
18	[PART]	142-473J-000	CHIP RES. 0603 47KOHM +-5 PHILIPS	11.00	R812 R816 R831 R851 R852 R853 R854 R857 R859 R862 R864
19	[PART]	212-103B-3K0	CHIP CERAMIC CAP. 0603 0.01UF X7R 16V +-10	2.00	C806 C807
20	[PART]	212-105F-3Z0	CHIP CERAMIC CAP. 0603 1UF Y5V 16V -20+80 PHILIPS	1.00	C805
21	[PART]	212-680C-6J0	CHIP CERAMIC CAP. 0603 68PF NP0 50V +-5 PHILIPS	2.00	C801 C802
22	[PART]	221-1064-M00	CHIP TANTAL CAP. 10UF 16V A SIZE +-20	1.00	C811
23	[PART]	305-0101-000	CHIP TR KRC101S SOT-23 KEC	1.00	Q802
24	[PART]	305-0104-000	CHIP TR KRC104S SOT-23 KEC	1.00	Q801
25	[PART]	305-9101-000	CHIP TR KRA101S SOT-23 KEC	1.00	Q803
26	[PART]	323-8721-002	IC CPU TMP87CM21CDFG-6U95 TOSHIBA	1.00	IC801
27	[PART]	338-2402-A00	IC EEPROM FT24C02A FMD	1.00	IC802
28	[PART]	350-0603-000	CHIP LED BLUE AOT-0603P-B01-V BLUEWIZ	8.00	D953 D954 D955 D957 D958 D959 D965 D966
29	[PART]	352-2299-000	LCD SDM8A2299A SANTECH	1.00	LCD801
30	[PART]	363-0400-000	CRYSTAL HC-49 / S 4.0MHZ 20P DTRON	1.00	X801
31	[PART]	500-7700-100	PCB [ASS'Y]LAY VER.1.1 4LAYER CAPITAL	1.00	
32	[PART]	500-7700-200	PCB LED 1LAYER CAPITAL	1.00	
33	[PART]	564-1109-100	SWITCH TACT KFC-821 GABOU	5.00	SW801 SW802 SW806 SW807 SW808
34	[PART]	701-C7700-60A	DIFFUSER LENS ACRYL CLEAR	1.00	
35	[PART]	701-C7700-70B	REFLECTOR ACRYL CLEAR *TOOL MODIFY*	1.00	

36	[PART]	702-C7700-50A	LCD BRACKET SPTE 0.3T DESHAN	1.00	
37	[PART]	703-C7700-20A	ZEBRA SILICONE	1.00	
38	[PART]	718-R000D-036	EVA SPONGE-B 20X2.0X0.8T, BLACK	2.00	for LCD bracket
39	[PART]	718-R000D-037	EVA SPONGE-A 49X2.0X0.8T, BLACK	2.00	for LCD bracket
40	[PART]	722-R0000-001	WHITE SHEET POLYESTER 0.1T	1.00	
41	[ASS'Y]	5A0-7702-300	MAIN PCBA ASS'Y - TCB771	1.00	
42	[PART]	102-100J-S00	FILM RES. 100HM 0.5W +-5 ST	1.00	R921
43	[PART]	102-229J-S00	FILM RES. 2.20HM 0.5W +-5 ST	1.00	R712
44	[PART]	102-471J-S00	FILM RES. 470OHM 0.5W +-5 ST	2.00	R953 R954
45	[PART]	102-472J-S00	FILM RES. 4.7KOHM 0.5W +-5 ST	1.00	R713
46	[PART]	103-102J-S00	FILM RES. 1KOHM 1W +-5 ST	1.00	R951
47	[PART]	103-561J-S00	FILM RES. 560OHM 1W +-5 ST MINI	1.00	R952
48	[PART]	112-100J-S00	METAL OXID RESISTOR 100HM 2W +-5 ST	1.00	R208
49	[PART]	141-332J-000	CHIP RES. 0402 3.3KOHM +-5 SAMSUNG_PHILIPS	1.00	R167
50	[PART]	142-000J-000	CHIP RES. 0603 00HM +-5 PHILIPS	3.00	R187 R201 R572
51	[PART]	142-010J-000	CHIP RES. 0603 10HM +-5 PHILIPS	2.00	R206 R706
52	[PART]	142-100J-000	CHIP RES. 0603 100HM +-5 PHILIPS	2.00	R133 R301
53	[PART]	142-101J-000	CHIP RES. 0603 1000HM +-5 PHILIPS	7.00	R104 R109 R134 R168 R314 R401 R932
54	[PART]	142-102J-000	CHIP RES. 0603 1KOHM +-5 PHILIPS	17.00	R164 R182 R183 R185 R200 R222 R234 R238 R308 R312 R321 R410 R501 R955 R956 R957 R958
55	[PART]	142-103J-000	CHIP RES. 0603 10KOHM +-5 PHILIPS	13.00	R102 R123 R137 R157 R192 R211 R315 R412 R413 R414 R703 R823 R914
56	[PART]	142-104J-000	CHIP RES. 0603 100KOHM +-5 PHILIPS	9.00	R140 R141 R159 R186 R188 R202 R233 R309 R311
57	[PART]	142-122J-000	CHIP RES. 0603 1.2KOHM +-5 PHILIPS	1.00	R571
58	[PART]	142-152J-000	CHIP RES. 0603 1.5KOHM +-5 PHILIPS	4.00	R302 R304 R742 R924
59	[PART]	142-153J-000	CHIP RES. 0603 15KOHM +-5 PHILIPS	4.00	R155 R166 R235 R323
60	[PART]	142-154J-000	CHIP RES. 0603 150KOHM +-5 PHILIPS	2.00	R189 R701
61	[PART]	142-183J-000	CHIP RES. 0603 18KOHM +-5 PHILIPS	1.00	R417
62	[PART]	142-221J-000	CHIP RES. 0603 220OHM +-5 PHILIPS	2.00	R169 R702
63	[PART]	142-222J-000	CHIP RES. 0603 2.2KOHM +-5 PHILIPS	13.00	R108 R152 R203 R237 R307 R402 R817 R822 R912 R922 R923 R961 R01
64	[PART]	142-223J-000	CHIP RES. 0603 22KOHM +-5 PHILIPS	5.00	R132 R162 R163 R175 R305
65	[PART]	142-224J-000	CHIP RES. 0603 220KOHM +-5 PHILIPS	2.00	R171 R177
66	[PART]	142-225J-000	CHIP RES. 0603 2.2MOHM +-5 PHILIPS	1.00	R153
67	[PART]	142-229J-000	CHIP RES. 0603 2.2OHM +-5 PHILIPS	2.00	R204 R711
68	[PART]	142-272J-000	CHIP RES. 0603 2.7KOHM +-5 PHILIPS	1.00	R205
69	[PART]	142-273J-000	CHIP RES. 0603 27KOHM +-5 PHILIPS	3.00	R103 R403 R416
70	[PART]	142-332J-000	CHIP RES. 0603 3.3KOHM +-5 PHILIPS	2.00	R138 R191
71	[PART]	142-333J-000	CHIP RES. 0603 33KOHM +-5 PHILIPS	2.00	R404 R407
72	[PART]	142-335J-000	CHIP RES. 0603 3.3MOHM +-5 PHILIPS	1.00	R135
73	[PART]	142-391J-000	CHIP RES. 0603 390OHM +-5 PHILIPS	1.00	R156

74	[PART]	142-393J-000	CHIP RES. 0603 39KOHM +-5 PHILIPS	1.00	R306
75	[PART]	142-470J-000	CHIP RES. 0603 47OHM +-5 PHILIPS	3.00	R184 R705 R913
76	[PART]	142-471J-000	CHIP RES. 0603 470OHM +-5 PHILIPS	7.00	R101 R105 R106 R165 R181 R236 R931
77	[PART]	142-472J-000	CHIP RES. 0603 4.7KOHM +-5 PHILIPS	8.00	R161 R180 R223 R322 R324 R406 R704 R962
78	[PART]	142-473J-000	CHIP RES. 0603 47KOHM +-5 PHILIPS	10.00	R139 R172 R174 R176 R300 R303 R316 R409 R411 R415
79	[PART]	142-474J-000	CHIP RES. 0603 470KOHM +-5 PHILIPS	2.00	R405 R573
80	[PART]	142-562J-000	CHIP RES. 0603 5.6KOHM +-5 PHILIPS	1.00	R408
81	[PART]	142-563J-000	CHIP RES. 0603 56KOHM +-5 PHILIPS	1.00	R313
82	[PART]	142-822J-000	CHIP RES. 0603 8.2KOHM +-5 SAMSUNG_PHILIPS	1.00	R915
83	[PART]	142-823J-000	CHIP RES. 0603 82KOHM +-5 PHILIPS	1.00	R173
84	[PART]	162-104V-001	TRIM. POTENTIOMETER WS0612-B104-000-G36 CTR	2.00	RV571 RV572
85	[PART]	162-222V-001	TRIM. POTENTIOMETER WS0612-B222-000-G36 CTR	1.00	RV231
86	[PART]	162-223V-001	TRIM. POTENTIOMETER WS0612-B223-000-G36 CTR	1.00	RV401
87	[PART]	162-472V-001	TRIM. POTENTIOMETER WS0612-B472-000-G36 CTR	2.00	RV131 RV911
88	[PART]	172-101J-600	NTC THERMISTOR 100OHM NCP18XF101J03RB MURATA	1.00	TH131
89	[PART]	172-103J-800	NTC THERMISTOR 10KOHM NCP18XH103J03RB MURATA	1.00	TH101
90	[PART]	202-1059-M00	ELECT CAP. 1UF KR1-16V010MA 5x11 DONGXIANG	3.00	C167 C407 C408
91	[PART]	202-1069-M00	ELECT CAP. 10UF KR1-16V100MA 5x11 DONGXIANG	8.00	C208 C232 C331 C332 C333 C913 C921 C931
92	[PART]	202-1079-M00	ELECT CAP. 100UF KR3-16V101MA 5x11 DONGXIANG	3.00	C143 C821 C923
93	[PART]	202-108E-M00	ELECT CAP. 1000UF KR1-16V102MF 10x20 DONGXIANG	4.00	C207 C213 C217 C912
94	[PART]	202-2259-M00	ELECT CAP. 2.2UF KR1-16V2R2MA 5x11 DONGXIANG	1.00	C741
95	[PART]	202-2269-M00	ELECT CAP. 22UF KR1-16V220MA 5x11 DONGXIANG	1.00	C221
96	[PART]	202-2279-M00	ELECT CAP. 220UF KR1-16V221MB 5x11 DONGXIANG	3.00	C210 C953 C954
97	[PART]	202-4759-M00	ELECT CAP. 4.7UF KR1-16V4R7MA 5x11 DONGXIANG	2.00	C411 C960
98	[PART]	202-4769-M00	ELECT CAP. 47UF KR1-16V470MA 5x11 DONGXIANG	3.00	C185 C233 C933
99	[PART]	205-1070-M00	ELECT CAP. 100UF 50V 8X11.5 DONGXIANG	1.00	C904
100	[PART]	212-020C-6C0	CHIP CERAMIC CAP. 0603 2PF NP0 50V +-0.25 PHILIPS	1.00	C730
101	[PART]	212-030C-6C0	CHIP CERAMIC CAP. 0603 3PF NP0 50V +-0.25 PHILIPS	1.00	C319
102	[PART]	212-060C-6C0	CHIP CERAMIC CAP. 0603 6PF NP0 50V +-0.25 PHILIPS	2.00	C317 C321
103	[PART]	212-080C-6C0	CHIP CERAMIC CAP. 0603 8PF NP0 50V +-0.25 PHILIPS	1.00	C326
104	[PART]	212-100C-6J0	CHIP CERAMIC CAP. 0603 10PF NP0 50V +-5 PHILIPS	5.00	C96 C110 C113 C324 R107
105	[PART]	212-101C-6J0	CHIP CERAMIC CAP. 0603 100PF NP0 50V +-5 PHILIPS	12.00	C101 C105 C109 C303 C304 C305 C313 C314 C711 C712 C731 C733
106	[PART]	212-102B-3K0	CHIP CERAMIC CAP.0603 0.001UF X7R 16V +-10	1.00	C230
107	[PART]	212-103B-3K0	CHIP CERAMIC CAP. 0603 0.01UF X7R 16V +-10	37.00	C111 C114 C115 C116 C117 C118 C153 C154 C156 C157 C161 C162 C183 C184 C201 C231 C234 C235 C323 C412 C415 C501 C502 C503 C504 C506 C703 C704 C708 C713 C901 C902 C903 C911 C922 C924 C932
108	[PART]	212-104B-3K0	CHIP CERAMIC CAP.0603 0.1UF X7R 16V +-10 PHILIPS	23.00	C122 C123 C132 C134 C135 C137 C138 C168 C169 C180 C181 C186 C211 C236 C309 C322 C325 C401 C402 C405 C413 C571 C573
109	[PART]	212-104B-6K0	CHIP CERAMIC CAP.0603 0.1UF X7R 50V +-10 PHILIPS	1.00	C404

110	[PART]	212-105F-3Z0	CHIP CERAMIC CAP. 0603 1UF Y5V 16V -20+80 PHILIPS	2.00	C159 C961
111	[PART]	212-150C-6J0	CHIP CERAMIC CAP. 0603 15PF NP0 50V +-5 PHILIPS	1.00	C119
112	[PART]	212-151C-6J0	CHIP CERAMIC CAP. 0603 150PF NP0 50V +-5 PHILIPS	4.00	C102 C104 C106 C311
113	[PART]	212-160C-6J0	CHIP CERAMIC CAP. 0603 16PF NP0 50V +-5 PHILIPS	1.00	C316
114	[PART]	212-180C-6J0	CHIP CERAMIC CAP. 0603 18PF NP0 50V +-5 PHILIPS	3.00	C98 C99 C112
115	[PART]	212-181C-6J0	CHIP CERAMIC CAP. 0603 180PF NP0 50V +-5 PHILIPS	2.00	C701 C734
116	[PART]	212-220C-6J0	CHIP CERAMIC CAP. 0603 22PF NP0 50V +-5 PHILIPS	1.00	C312
117	[PART]	212-221C-6J0	CHIP CERAMIC CAP. 0603 220PF NP0 50V +-5 PHILIPS	4.00	C329 C717 C719 C724
118	[PART]	212-223B-3K0	CHIP CERAMIC CAP. 0603 0.022UF X7R 16V +-10 PHILIP	5.00	C166 C203 C214 C238 C403
119	[PART]	212-223C-6J0	CHIP CERAMIC CAP. 0603 0.022UF NP0 50V +-5 PHILIP	3.00	C158 C166 C172
120	[PART]	212-224B-3K0	CHIP CERAMIC CAP. 0603 0.22UF X7R 16V +-10 PHILIPS	1.00	C140
121	[PART]	212-300C-6J0	CHIP CERAMIC CAP. 0603 30PF NP0 50V +-5 PHILIPS	1.00	C315
122	[PART]	212-330C-6J0	CHIP CERAMIC CAP. 0603 33PF NP0 50V +-5 PHILIPS	3.00	C108 C302 C318
123	[PART]	212-331C-6J0	CHIP CERAMIC CAP. 0603 330PF NP0 50V +-5 PHILIPS	6.00	C714 C715 C723 C725 C726 C729
124	[PART]	212-390C-6J0	CHIP CERAMIC CAP. 0603 39PF NP0 50V +-5 PHILIPS	1.00	C700
125	[PART]	212-470C-6J0	CHIP CERAMIC CAP. 0603 47PF NP0 50V +-5 PHILIPS	6.00	C103 C107 C182 C328 C720 C722
126	[PART]	212-471C-6J0	CHIP CERAMIC CAP. 0603 470PF NP0 50V +-5 PHILIPS	1.00	C718
127	[PART]	212-473B-3K0	CHIP CERAMIC CAP. 0603 0.047UF X7R 16V +-10	8.00	C152 C163 C164 C165 C306 C310 C721 C914
128	[PART]	212-474B-3K0	CHIP CERAMIC CAP. 0603 0.47UF X7R 16V +-10	1.00	C301
129	[PART]	212-474B-6K0	CHIP CERAMIC CAP. 0603 0.47UF X7R 50V +-10	1.00	C212
130	[PART]	212-560C-6J0	CHIP CERAMIC CAP. 0603 56PF NP0 50V +-5 PHILIPS	1.00	C130
131	[PART]	212-680C-6J0	CHIP CERAMIC CAP. 0603 68PF NP0 50V +-5 PHILIPS	4.00	C97 C131 C727 C732
132	[PART]	212-681C-6J0	CHIP CERAMIC CAP. 0603 680PF NP0 50V +-5 PHILIPS	1.00	C414
133	[PART]	212-683B-6K0	CHIP CERAMIC CAP. 0603 0.068UF X7R 16V +-10 PHILIP	1.00	C410
134	[PART]	212-820C-6J0	CHIP CERAMIC CAP. 0603 82PF NP0 50V +-5 PHILIPS	2.00	C406 C707
135	[PART]	22C-101C-J00	DISK CAP. 100PF 25V +-5	1.00	C735
136	[PART]	22D-470C-J00	DISK CAP. 47PF 50V +-5	1.00	C735A
137	[PART]	230-2000-000	DIP TRIMMER CAP. 6DIA 20PF KCVN620 FOKITS	1.00	CT301
138	[PART]	300-1504-000	CHIP TR KTA1504S SOT-23 KEC	4.00	Q164 Q233 Q912 Q924
139	[PART]	300-3875-000	CHIP TR. SWITCHING KTC3875S SOT-23 KEC	9.00	Q151 Q181 Q182 Q183 Q185 Q234 Q742 Q923 Q931
140	[PART]	300-3880-000	CHIP TR KTC3880S SOT-23 KEC	8.00	Q101 Q161 Q162 Q301 Q302 Q303 Q701 Q702
141	[PART]	301-0211-000	CHIP TR 2SK211-Y TOSHIBA	2.00	Q102 Q103
142	[PART]	302-1006-000	TR KTC1006 KEC	1.00	Q703
143	[PART]	302-1241-000	TRANSISTOR KTA1241 KEC	3.00	Q221 Q951 Q952
144	[PART]	302-2078-000	TR 2SC2078E SANYO	1.00	Q704
145	[PART]	302-3205-000	TR. DIP TYPE KTC3205 KEC	1.00	Q921
146	[PART]	305-0101-000	CHIP TR KRC101S SOT-23 KEC	10.00	Q104 Q105 Q153 Q222 Q305 Q311 Q312 Q313 Q401 Q402 Q953 Q954
147	[PART]	305-0102-000	CHIP TR KRC102S SOT-23 KEC	1.00	Q914

148	[PART]	305-0110-000	CHIP TR KRC110S SOT-23 KEC	2.00	Q184 Q961
149	[PART]	305-0111-000	CHIP TR KRC111S SOT-23 KEC	3.00	Q202 Q502 Q962
150	[PART]	305-0112-000	CHIP TR KRC112S SOT-23 KEC	4.00	Q122 Q152 Q154 Q913
151	[PART]	305-9102-000	CHIP TR KRA102S SOT-23 KEC	1.00	Q163
152	[PART]	311-1962-000	POWER FET KTA1962 A-O-U / P KEC	1.00	Q911
153	[PART]	331-0358-A00	IC OP AMP KIA358F KEC	1.00	IC102
154	[PART]	331-4558-A00	IC OP AMP KIA4558F KEC	1.00	IC401
155	[PART]	332-2003-000	IC AUDIO AMP TDA2003 ST	1.00	IC201
156	[PART]	335-7152-A00	IC PLL LC7152NM SANYO	1.00	IC301
157	[PART]	336-5019-A00	IC IF SL5019 AUK	1.00	IC101
158	[PART]	340-0051-A00	CHIP DIODE ZENER (ESC) KDZ5.1EV KEC	1.00	DZ181
159	[PART]	340-0056-A00	CHIP DIODE ZENER (ESC) KDZ5.6EV KEC	1.00	DZ931
160	[PART]	340-0082-A00	CHIP DIODE ZENER (ESC) KDZ8.2EV KEC	1.00	DZ921
161	[PART]	341-0251-A00	DIODE VARICAP KDV251S SOT-23 KEC	2.00	D301 D302
162	[PART]	342-0181-A00	CHIP DIODE SWITCHING KDS181 SOT-23 KEC	1.00	D401
163	[PART]	342-0184-A00	CHIP DIODE SWITCHING KDS184 SOT-23 KEC	14.00	D102 D103 D105 D171 D180 D181 D182 D233 D571 D572 D741 D742 D921 D961
164	[PART]	342-0226-A00	CHIP DIODE SWITCHING KDS226 SOT-23 KEC	1.00	D101
165	[PART]	342-1114-A00	CHIP DIODE SWITCHING KDS114 KEC	1.00	D303
166	[PART]	342-5822-000	DIP SCHOTTKY DIODE 1N5822 ONSEMI	1.00	D900
167	[PART]	343-1060-000	DIODE 1N60	1.00	D161
168	[PART]	343-4004-000	DIODE 1N4004TR 400V 1A	1.00	D232
169	[PART]	343-5402-000	DIODE 1N5402	1.00	D901
170	[PART]	360-1024-000	CRYSTAL 10.24MHZ 32PF 30PPM HC-49U DTRON	1.00	X101
171	[PART]	363-0045-000	CRYSTAL 4.5MHZ, HC-49S R49SDA-004500-FA-12-30-TA	1.00	X301
172	[PART]	367-1060-200	CRYSTAL FILTER 10.695MHZ 49T-3L 10L08A DTRON	1.00	XF101
173	[PART]	373-0455-400	CERAMIC FILTER LTW33-455HT CQ	1.00	CF101
174	[PART]	400-0019-000	TRANSFORMER CHOCK T1 EI-19 FINE	1.00	T901
175	[PART]	400-0024-000	TRANSFORMER EI-24(MOD) T2 FINE	1.00	T201
176	[PART]	406-2508-000	COIL SPRING 2.5X0.8X7T : R 0.11UH FINE	1.00	L704
177	[PART]	406-4005-000	COIL SPRING 4X0.5X6T : R FINE	1.00	L712
178	[PART]	406-4005-100	COIL SPRING 4X0.5X7T : R FINE	1.00	L713
179	[PART]	406-4005-200	COIL SPRING 4X0.5X10T : R FINE	1.00	L714
180	[PART]	406-5006-000	COIL SPRING 5X0.6X13.5T : R 0.5UH FINE	1.00	L707
181	[PART]	406-6008-000	COIL SPRING 6X0.8X5T : R 0.225UH FINE	1.00	L711
182	[PART]	410-0270-000	IFT COIL RF FREE TX 27MHZ TX1 FINE	2.00	L701 L702
183	[PART]	410-0272-000	IFT COIL 27MHZ RX (7RC) RX2 FINE	1.00	L107
184	[PART]	410-0273-000	IFT COIL 27MHZ RX1(Wire Diameter : $\phi$ 0.1) FINE	1.00	L101
185	[PART]	410-0370-000	IFT COIL 37MHZ TX TX2 FINE	1.00	L703



186	[PART]	410-1070-000	IFT COIL 10.7MHZ RX-B RX3 FINE	1.00	L108
187	[PART]	410-1500-000	IFT COIL 15MHZ TXRX VCO2 FINE	1.00	L302
188	[PART]	410-1650-000	IFT COIL 16.5MHZ VCO VCO1 FINE	1.00	L301
189	[PART]	410-4550-000	IFT COIL DETECTOR 455KHZ RX4 FINE	1.00	L109
190	[PART]	410-4551-000	IFT COIL 455KHZ-B RX5 FINE	1.00	L112
191	[PART]	425-0150-000	COIL AXIAL 1.5UH AL0305 MATSUTA	1.00	L102
192	[PART]	425-0180-000	COIL AXIAL 1.8UH AL0305 MATSUTA	1.00	L106
193	[PART]	425-0680-000	COIL AXIAL 6.8UH AL0305 MATSUTA	1.00	L706
194	[PART]	427-0017-000	CORE SPRING 5.5TX0.45XM5ERX2.3 0.17UH FINE	3.00	L103 L104 L105
195	[PART]	427-0600-000	COIL CHOCK 6UH BOBBIN CORE	1.00	L201
196	[PART]	500-7700-300	PCB MAIN VER.2.0C 4LAYER	1.00	
197	[PART]	534-2500-100	JACK MINI PJ-206 GABOU	1.00	J203
198	[PART]	535-3500-200	JACK DC PJ-625B GABOU	1.00	J202
199	[PART]	540-0218-000	WAFER 2PIN PH-2A 180C FINE	1.00	J205
200	[PART]	540-0618-000	WAFER 6PIN PH-6A 180C	1.00	J503
201	[PART]	540-1618-000	WAFER 16PIN PH-16A 180C FINE	1.00	J102
202	[PART]	547-0825-000	WIRE STRIP D0.8 L25MM	1.00	JP1
203	[PART]	702-C7700-60A	TX SHIELD CAN(1) SPT 0.3T DESHAN	1.00	For Main PCB(location: lower)
204	[PART]	702-C7700-80A	VCO SHIELD CAN SPT 0.3T DESHAN	1.00	For Vco
205	[PART]	702-C7701-40A	TX SHIELD CAN(2) SPT 0.3T BONSO	1.00	For Main PCB(location: upper)
206	[PART]	702-C7701-50A	SHIELD COVER SPT 0.3T BONSO	1.00	For TX shield can(2)
207	[ASS'Y]	5A3-7702-006	TCB771 DSS PCB ASS'Y(DSS-001)	1.00	
208	[PART]	142-101J-000	CHIP RES. 0603 100OHM +-5 PHILIPS	1.00	R500
209	[PART]	142-222J-000	CHIP RES. 0603 2.2KOHM +-5 PHILIPS	1.00	R511
210	[PART]	142-223J-000	CHIP RES. 0603 22KOHM +-5 PHILIPS	1.00	R502
211	[PART]	142-473J-000	CHIP RES. 0603 47KOHM +-5 PHILIPS	5.00	R509 R512 R513 R515 R516
212	[PART]	142-564J-000	CHIP RES. 0603 560KOHM +-5 PHILIPS	2.00	R504 R508
213	[PART]	166-474J-000	TRIM. POTENTIOMETER 470KB TMC3KJ0B0470KTR NOBLE	1.00	RV501
214	[PART]	212-103B-3K0	CHIP CERAMIC CAP. 0603 0.01UF X7R 16V +-10	1.00	C505
215	[PART]	212-104B-3K0	CHIP CERAMIC CAP.0603 0.1UF X7R 16V +-10 PHILIPS	4.00	C501 C509 C512 C513
216	[PART]	212-105A-2K0	CHIP CERAMIC CAP. 0603 1UF X5R 10V +-10	1.00	C511
217	[PART]	212-222B-3K0	CHIP CERAMIC CAP. 0603 0.0022UF X7R 16V +-10 PHILI	1.00	C504
218	[PART]	212-330C-6J0	CHIP CERAMIC CAP. 0603 33PF NP0 50V +-5 PHILIPS	2.00	C507 C508
219	[PART]	212-331B-6K0	CHIP CERAMIC CAP. 0603 330PF X7R 50V +-10 PHILIPS	1.00	C506
220	[PART]	212-333B-3K0	CHIP CERAMIC CAP.0603 0.033UF X7R 16V +-10 PHILIPS	1.00	C502
221	[PART]	212-472B-3K0	CHIP CERAMIC CAP.0603 0.0047UF X7R 16V +-10 PHILIP	1.00	C503
222	[PART]	221-1064-M00	CHIP TANTAL CAP. 10UF 16V A SIZE +-20	1.00	C500
223	[PART]	221-4744-M00	CHIP TANTAL CAP. 0.47UF 16V A SIZE +-20	1.00	C510

224	[PART]	300-3875-000	CHIP TR. SWITCHING KTC3875S SOT-23 KEC	1.00	Q501
225	[PART]	331-0358-A00	IC OP AMP KIA358F KEC	1.00	IC501
226	[PART]	342-0226-A00	CHIP DIODE SWITCHING KDS226 SOT-23 KEC	1.00	D501
227	[PART]	500-7702-000	DSS-001, 002 PCB	1.00	
228	[PART]	545-0260-200	WIRE UL1007 / AWG26 BLACK 40mm 3 : 3	1.00	
229	[PART]	545-0261-200	WIRE UL1007 / AWG26 RED 40mm 3 : 3	1.00	
230	[PART]	545-0263-000	WIRE UL1007 / AWG26 YELLOW 40mm 3 : 3	1.00	
231	[PART]	545-0269-000	WIRE UL1007 / AWG26 WHITE 40mm 3 : 3	1.00	
232	[PART]	718-R000D-050	CUSHION EVA SPONGE 16X22X3.0T 3M DOUBLE SIDE TAPE	1.00	
233	[ASS'Y]	700-C71BE-A00	ESCUTCHEON ASS'Y - TCB771B	1.00	
234	[PART]	701-C71B0-10B	ESCUTCHEON ABS. BLACK	1.00	FRONT CASE PLASTIC
235	[PART]	701-C7700-20A	BEZEL ACRYL CLEAR	1.00	
236	[PART]	701-C7700-50A	CH KNOB ABS(BLACK COLOR)	1.00	For Channel
237	[PART]	701-C7700-80A	WINDOW ACRYL CLEAR	1.00	
238	[PART]	701-C7700-90A	ILLUMINATOR ACRYL CLEAR	1.00	For Rf & On/Off & Channel
239	[PART]	701-C88B0-20A	SQ KNOB ABS BLACK SPRAY	2.00	
240	[PART]	702-C7700-40A	D-SPRING SK5 0.2T ZN PLATING (WHITE) TTI	2.00	For Rf & On/Off
241	[PART]	703-C7700-10A	KEYPAD SILICONE CLEAR PU COATING	1.00	
242	[PART]	706-2605S-NFH	SCREW MACH(+) M2.6X5L Ni PLATED FH	4.00	Esc+Main body mounting
243	[PART]	708-26082-NBH	SCREW TAP(+) 2.6X8L-2S NI PLATING BH	5.00	2pc:illuminator mounting, 3pc:Key PCB mounting
244	[PART]	712-M70NI-001	RING NUT BsBm Ni PLATING	3.00	For Channel, Rf, On/Off
245	[PART]	719-R000D-003	DOUBLE TAPE FOR BEZEL-1 23X1.1X0.16T	1.00	For Bezel
246	[PART]	719-R000D-004	DOUBLE SIDE TAPE FOR DIFFUSER 29X3.5X0.2T	1.00	For diffuser
247	[PART]	719-S000D-001	DOUBLE TAPE FOR BEZEL 3M 0.16T	1.00	FOR Bezel
248	[PART]	719-S000D-002	DOUBLE TAPE FOR WINDOW 3M 0.16T	1.00	For Window
249	[ASS'Y]	700-C770C-A00	TCB770 COVER ASS'Y	1.00	
250	[PART]	520-6600-000	SPEAKER 66mm 66AR000-8P-4K11 ASAHI	1.00	SKP201
251	[PART]	540-0220-000	WIRE HARNESS PH-2PIN TO OPEN UL 1007 NO26 L200mm	1.00	J204
252	[PART]	702-C7700-10A	BOTTOM COVER SPC + BLACK COATING 0.75T DESHAN	1.00	
253	[PART]	702-C7700-20B	UPPER COVER BLACK COLOR TTI CB TRANSCEIVER SILK	1.00	
254	[PART]	702-C7700-30A	BRACKET SPK EGI 1.0T COATING DESHAN	3.00	For speaker
255	[PART]	706-3008T-BBH	SCREW MACH(+) 3X8L-TAPTITE BLACK BH	9.00	Bracket(spk) mounting(3pcs) Main body + Bottom & upper cover mounting(6pcs)
256	[PART]	715-C650N-001	FELT (SPK) D65X0.3T BLACK	1.00	For speaker
257	[PART]	715-R000D-002	FELT (COVER) 8X133X0.3T BLACK	4.00	For bottom cover & upper cover adhesive(location: side)
258	[PART]	718-R000D-001	CUSHION 20X24X4.0T EVA SPONGE BLACK	1.00	For upper cover adhesive(location: center)
259	[ASS'Y]	700-C771M-B00	TCB771 MAIN BODY ASS'Y	1.00	
260	[PART]	541-0239-002	CONNECTOR FD-ANT-1 NINGBO	1.00	J701
261	[PART]	543-0200-001	POWER CORD 2PIN PLUG ASS'Y AWG#20 BSQ	1.00	J900

262	[PART]	701-C5500-70A	CORD STOPPER PP BLACK	1.00	Wire stopper
263	[PART]	701-C5500-80A	BUSH NYLON66 + GRASS 15%	1.00	For TR
264	[PART]	702-C7701-20A	MAIN BODY EGI 1.0T	1.00	
265	[PART]	702-C7701-30A	ANT. TERMINAL SPTE 0.2T	1.00	For Antenna
266	[PART]	706-3008T-BBH	SCREW MACH(+) 3X8L-TAPTITE BLACK BH	4.00	Main PCB + Main body mounting
267	[PART]	706-3010S-BBH	SCREW MACH(+) M3X10L BLACK BH	3.00	TR mounting
268	[PART]	711-M30NI-000	NUT M3 Ni PLATED	3.00	TR mounting
269	[PART]	713-M30NI-S01	SPRING WASHER M3	3.00	TR mounting
270	[PART]	718-R000D-050	CUSHION EVA SPONGE 16X22X3.0T 3M DOUBLE SIDE TAPE	1.00	On the DSS PCB
271	[PART]	719-R000D-005	CU TAPE-1 CU 49x9x0.1T	1.00	
272	[PART]	719-R000D-006	CU TAPE-2 CU 77X15X0.1T	1.00	
273	[PART]	723-C71B0-025	MICA SHEET L23XW17.5XT0.4MM	1.00	For A1962A
274	[PART]	723-C7700-001	MICA 0.6T	1.00	For TR
275	[ASS'Y]	8A0-C771-000	PACKING ASS'Y - TCB771	1.00	
276	[PART]	543-0201-001	POWER CORD 2PIN RECEPTACLE ASSY AWG20 2A BSQ	1.00	
277	[PART]	701-C7701-80A	STUD BOLT ABS M6X8L BLACK	2.00	
278	[PART]	702-C7701-00A	BRACKET SET DESHAN	1.00	
279	[PART]	702-C7701-10A	BRACKET MIC SUS304 1.0T	1.00	
280	[PART]	703-C7700-50A	PACKING RUBBER	2.00	
281	[PART]	706-3008T-BBH	SCREW MACH(+) 3X8L-TAPTITE BLACK BH	2.00	
282	[PART]	708-50121-ZTH	SCREW TAP(+) 5X12L-1S ZN PLATING TH	3.00	
283	[PART]	714-M30NI-001	STAR WASHER-S M3 NI PLATING B TYPE	2.00	
284	[PART]	714-M50NI-002	STAR WASHER-L M5 NI PLATING B TYPE	3.00	
285	[PART]	801-C771-000	GIFTBOX SW1E 2.0T - TCB770 REV.01	1.00	
286	[PART]	804-C770-001	INNER BOX A SW1E 2.0T BROWN	1.00	
287	[PART]	804-C770-002	INNER BOX B SW1E 2.0T BROWN	1.00	
288	[PART]	807-C770-000	INNER PAD FOR INNER BOX A	1.00	
289	[PART]	809-C771-000	OUTBOX DW1E 7.0T	0.10	
290	[PART]	817-0520-000	POLYBAG PE 50X200	1.00	
291	[PART]	817-0810-000	POLYBAG PE 80X100	2.00	
292	[PART]	817-2230-000	POLYBAG PE 220X300	1.00	
293	[PART]	820-C771-002	MANUAL(Rev.02)7Language_120Page(CRT manual Insert)	1.00	
294	[PART]	830-C771-000	NAME LABEL	1.00	for radio
295	[PART]	833-C771-000	CODE 39 SERIAL NO. STICKER	2.00	
296	[PART]	834-0001-000	WARNING LABEL	1.00	
297	[PART]	834-0002-000	ROHS STICKER - TTI	1.10	
298	[PART]	834-0004-000	COLOR TYPE STICKER B	1.00	
299	[PART]	834-ROTE-R00	ROSTEST MARK STICKER	2.00	

300	[PART]	835-C771-000	INTERLEAVED-25 BARCODE STICKER : 64X40mm	0.10	FOR OUTER CARTON
301	[PART]	837-0001-000	OPP TAPE 50MM TTI LOGO	0.29	
302	[PART]	838-0001-000	YELLOW STRAP	0.26	0.26m/ctn
303	[PART]	905-C880-000	CB MICROPHONE ASS'Y(AMC-5021)	1.00	